

PELLE COLLECTION INSTALLATION + CARE



unika vaev

COLLECTION BY



PAVONI

Hear yourself think®

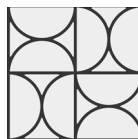
Pelle Collection Installation Instructions

The Pelle Collection includes tile and panel products. Each design features a precision-cut leather surface applied to a semi-rigid black PET acoustic felt substrate. The felt edges seen on the various products are intentional, allowing the black felt to form continuous pattern repeats across adjacent units when installed. The result is a visually continuous and acoustically absorptive surface suitable for wall and ceiling applications.

Tools and Materials

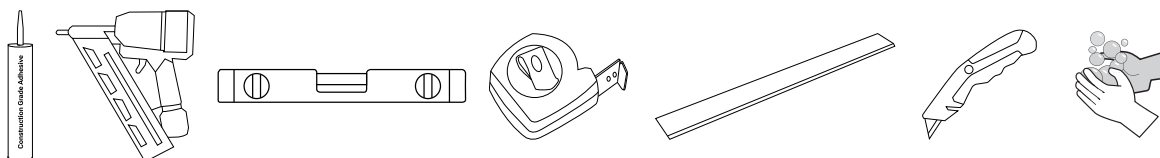
Supplied:

- Tiles or Panels only



Required:

- Construction-grade contact adhesive (installers preference)
- Pneumatic nailer (suitable for 23-gauge headless pins or 18-gauge brads, based on installer preference)
- Level or laser line for reference alignment
- Measuring tape
- Straight edge (metal preferred)
- Heavy-duty utility knife (recommended for field trimming and cutouts)
- Clean gloves (to prevent marking leather)
- Ecoustic® Trim Edging (optional for perimeter finishing)



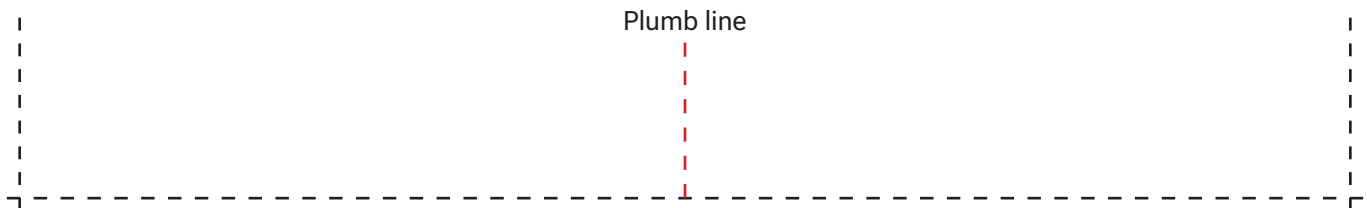
Preparation

1. **Inspect Panels:** Carefully remove product from packaging and inspect each piece for any damage prior to installation
2. **Surface Preparation**
 - A. Ensure the installation surface is clean, dry, smooth, flat, and structurally sound
 - B. A Level 4 finish is acceptable; Level 5 is recommended for best visual continuity
 - C. Do not install on wet, dusty, oily, textured, or unstable substrates

Pelle Collection Installation Instructions

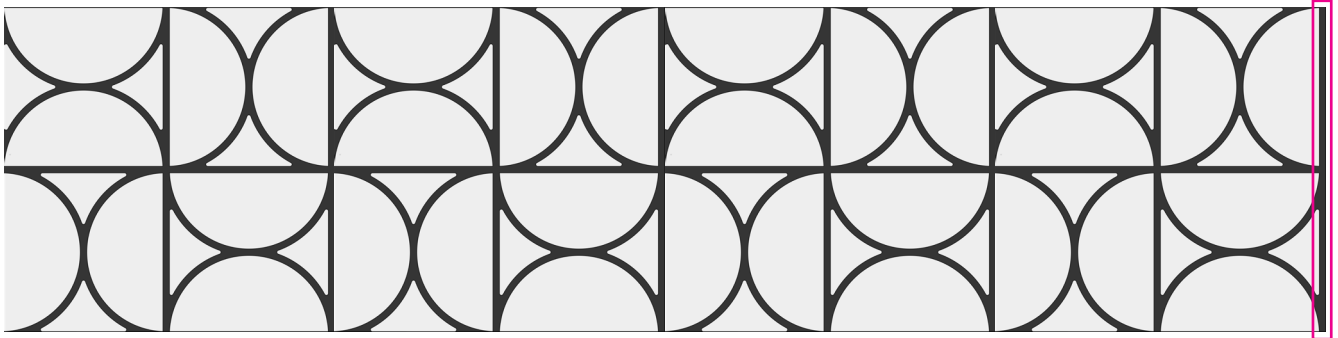
3. Plan Layout

- A. Identify the center of the installation area
- B. Snap a vertical reference (plumb) line through this center point using a laser or level
- C. Dry lay several tiles/panels to confirm:
 - I. Correct orientation of the pattern
 - II. Continuity of black felt reveal lines across edges where applicable
 - III. Desired directional flow of the leather pattern
 - IV. Thickness variation may occur, some panels or tiles may require shimming for flush alignment
- D. The installation will progress from the center outward to ensure a balanced final layout



4. Optional Trim (If required)

If the installation has exposed edges, install Ecooustic® Trim Edging before placing the tiles or panels. When preinstalling trim, please make certain that the final exterior measurement includes any reduction in size caused by trimming exterior felted edges (detail image below indicates edge location). Ensure the trim is level and properly aligned. (Trim is optional and not supplied)



5. First Tile or Panel Placement

Align the first tile or panel so that it aligns with the vertical reference line

Use one of the following primary fixing methods:

- A. Adhesive Fix Method
 - I. Apply a thin, even layer of adhesive to the back of the tile or panel
 - II. Position against the substrate
 - III. Press firmly to ensure full surface contact following adhesive manufacturers guidelines

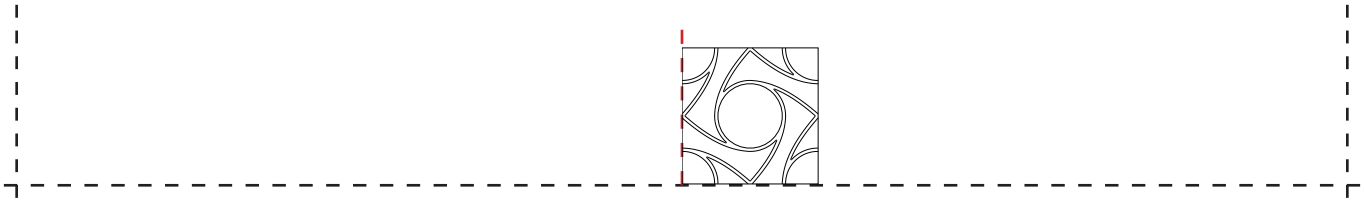
Pelle Collection Installation Instructions

B. Pin Nailing Method

- I. Position the tile or panel
- II. Secure directly through the PET portion of the tile only using:
 - a. 23-gauge headless pins for minimal visibility, or 18-gauge brads for increased holding strength
- III. Place nails near edges or pattern transitions where visually discreet (DO NOT NAIL INTO LEATHER FACE)
- IV. Confirm that all pin nails or brads are countersunk into the material and manually countersink as necessary

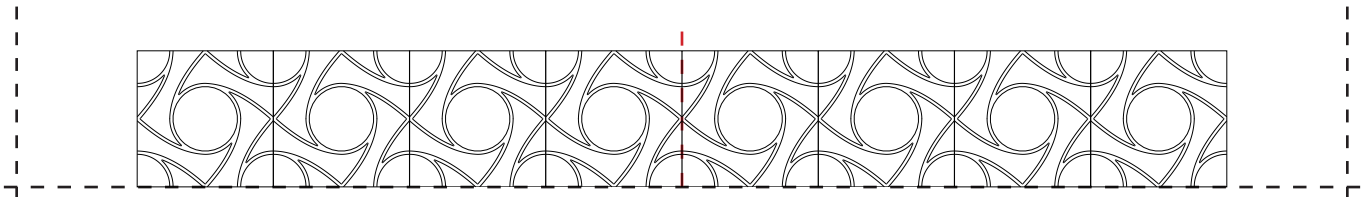
C. Combination Method (Optional)

- I. Apply adhesive as described above.
- II. Then use pin nails on the PET portion of the tile to reinforce placement, if needed.



6. Continuing the Installation

- A. Work horizontally from the center, installing tiles to the left and right.
- B. Frequently verify:
 - I. Alignment along the vertical reference line
 - II. Alignment and continuity of black felt reveal lines (product dependent)
 - III. Consistent spacing and pattern direction

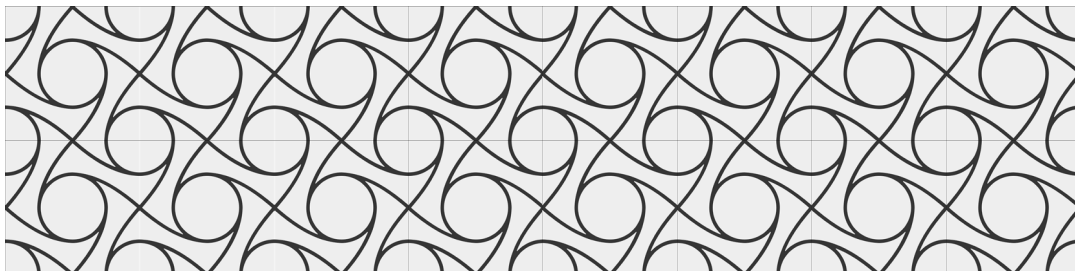


7. Field Trimming and Cutouts

- A. Trim tiles or panels using a straight edge and heavy-duty blade
- B. Use multiple light passes for clean edges

8. Final Inspection

- A. Ensure pattern and reveal alignment appear continuous under final lighting conditions
- B. Remove any adhesive residue with a dry, clean cloth
- C. Allow adhesive to fully cure before allowing surface contact or cleaning



Pelle Collection Care Instructions

Leather Care & Maintenance (Pavoni Leathers)

The Pelle Collection is finished with high-quality Pavoni leathers. Proper care will maintain appearance and longevity. All cleaning should be carried out using gentle methods to prevent damage to the leather surface.

General Care

- Dust panels regularly using a soft brush vacuum attachment or a dry microfiber cloth
- Avoid direct and prolonged exposure to sunlight, high heat, or forced airflow, which may cause fading or dryness
- Never use abrasive pads, solvents, bleach, ammonia-based cleaners, alcohol wipes, or steam cleaning equipment

Spills and Stains

- Blot spills immediately using a clean, absorbent cloth or sponge
- Do not rub the spill with pressure, as this can push liquids deeper into the leather
- If needed, apply a small amount of saddle soap to a slightly damp cloth, gently wipe the affected area, and blot dry
- If the spot remains, wipe the area in light circular motions using a soft damp cloth and lukewarm water
- Apply light to moderate pressure only, do not scrub
- Allow leather to air dry naturally, do not use a hair dryer or heater

Important Notes

- Do not oversaturate leather during cleaning
- If concerned about the visibility of a cleaning result, test first in a concealed area

Material Note

Because leather is a natural material, variations in grain and texture will occur from tile to tile. Once installed, these subtle differences in direction and character are considered an inherent part of the product's authentic appeal. This natural variation enhances the richness and depth of the finished installation.