

# PELLE COLLECTION



unika vaev

COLLECTION BY



PAVONI

Hear yourself think®

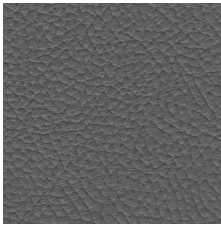


# PELLE COLLECTION LEATHER FINISHES

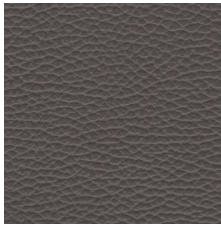
## Roma



Bright White



Dark Grey



Earth



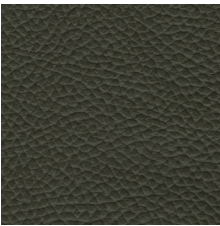
Green



Ivory



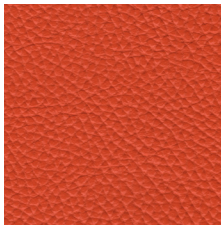
Mid Brown



Military Green



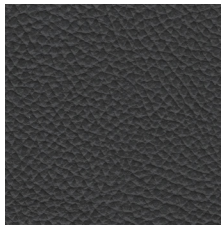
Ochre Yellow



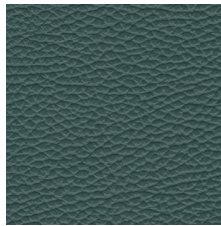
Orange



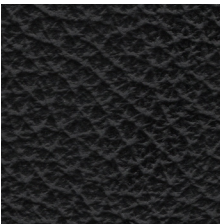
Peach



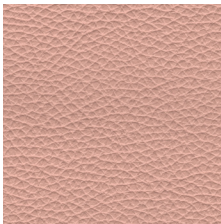
Pebble Grey



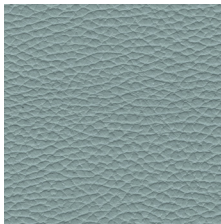
Petrol Blue



Pitch Black



Salmon



Sky Blue

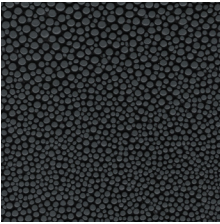


Taupe

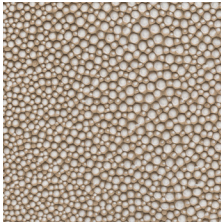


Wine

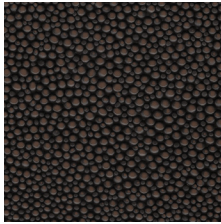
## Milano



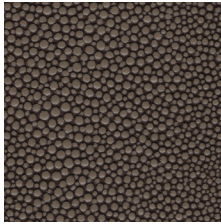
Black



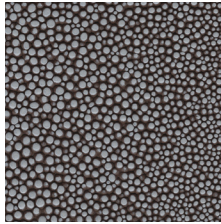
Cream



Dark Brown



Oak



Taupe

## Napoli



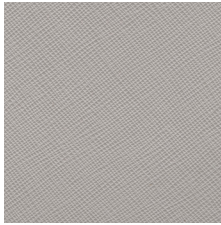
Blue



Cream



Jet Black



Light Grey

Because leather is a natural material, variations in grain and texture will occur from tile to tile. Once installed, these subtle differences in direction and character are considered an inherent part of the product's authentic appeal. This natural variation enhances the richness and depth of the finished installation. [unikavaev.com](http://unikavaev.com) | +1 860-886-1700



# PELLE COLLECTION LEATHER FINISHES

## Torino



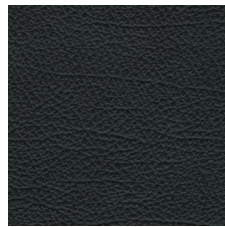
Black Knight



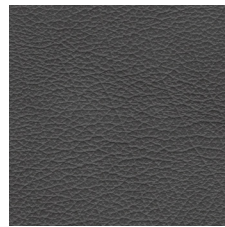
Blush Pink



Cream



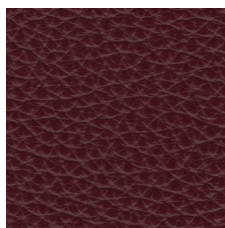
Dark Green



Dark Grey



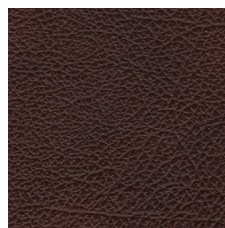
Deep Pink



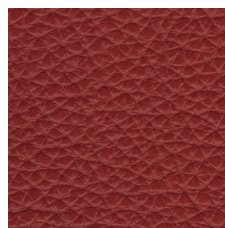
Deep Red



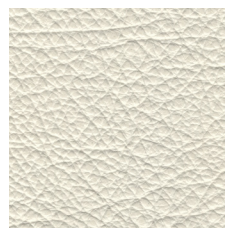
Light Grey



Mid Brown



Rusty Brown

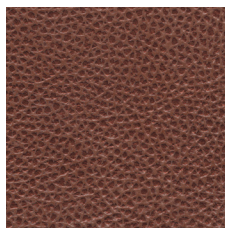


Winter White

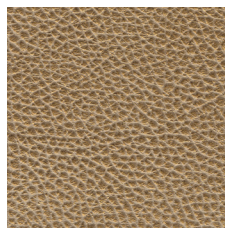


Taupe

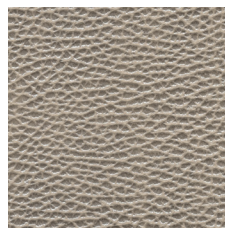
## Perlata



Copper



Gold



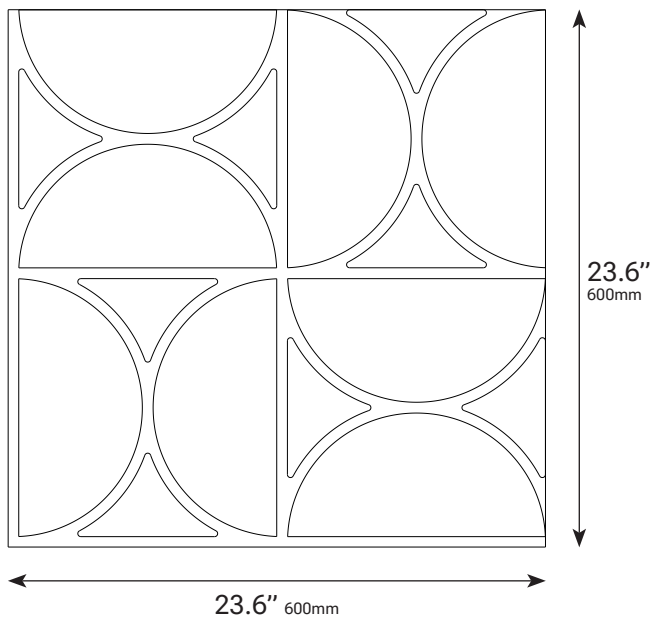
Silver Grey



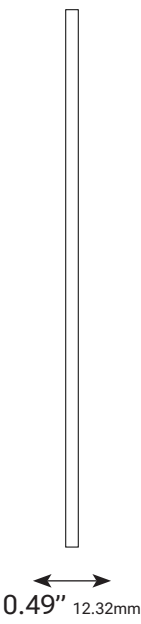
Because leather is a natural material, variations in grain and texture will occur from tile to tile. Once installed, these subtle differences in direction and character are considered an inherent part of the product's authentic appeal. This natural variation enhances the richness and depth of the finished installation. [unikavaev.com](http://unikavaev.com) | +1 860-886-1700

# PELLE COLLECTION DIMENSIONS

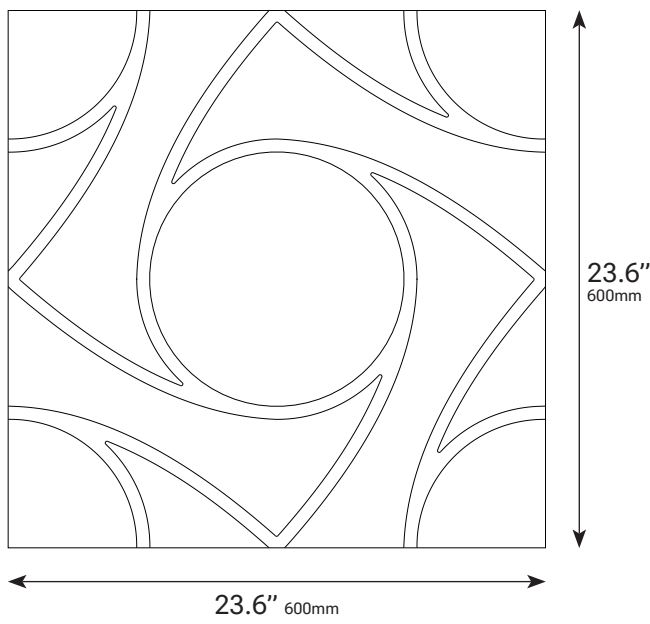
Affarone Tile Front



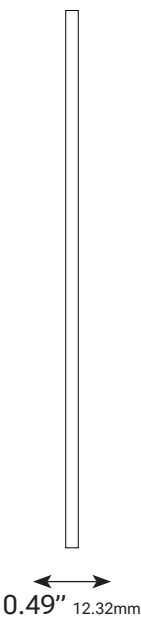
Affarone Tile Side



Volante Tile Front

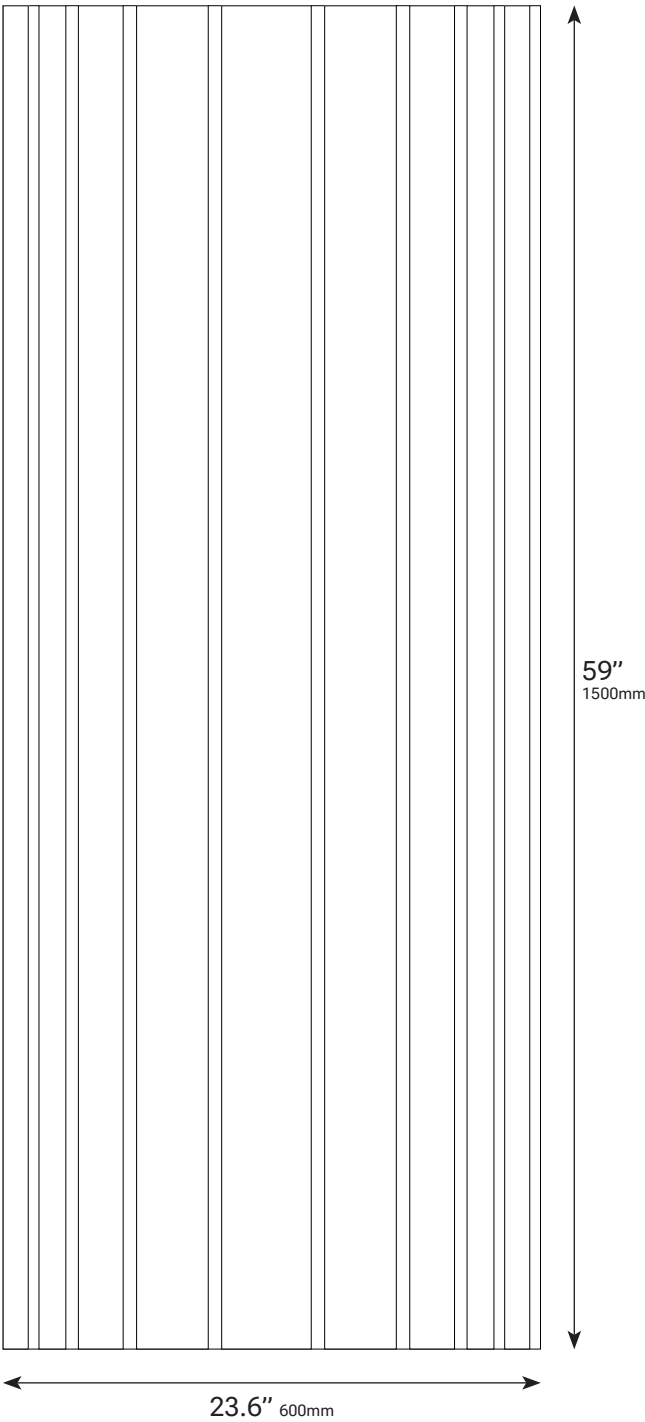


Volante Tile Side

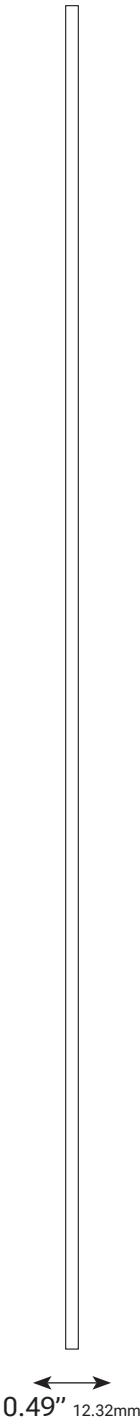


# PELLE COLLECTION DIMENSIONS

Strisce Panel Front

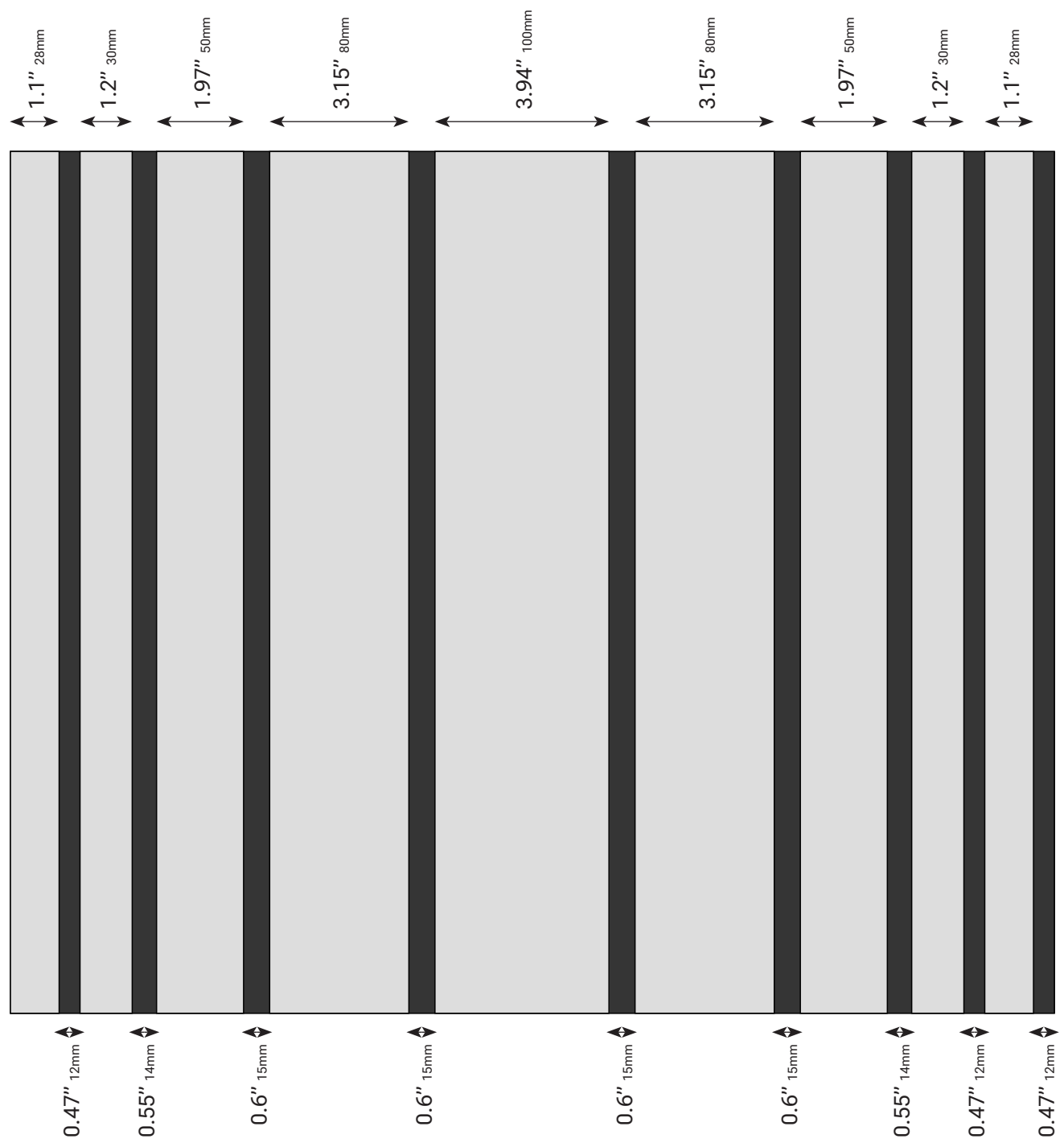


Strisce Panel Side



# PELLE COLLECTION DIMENSIONS

Strisce Panel Pattern Detail



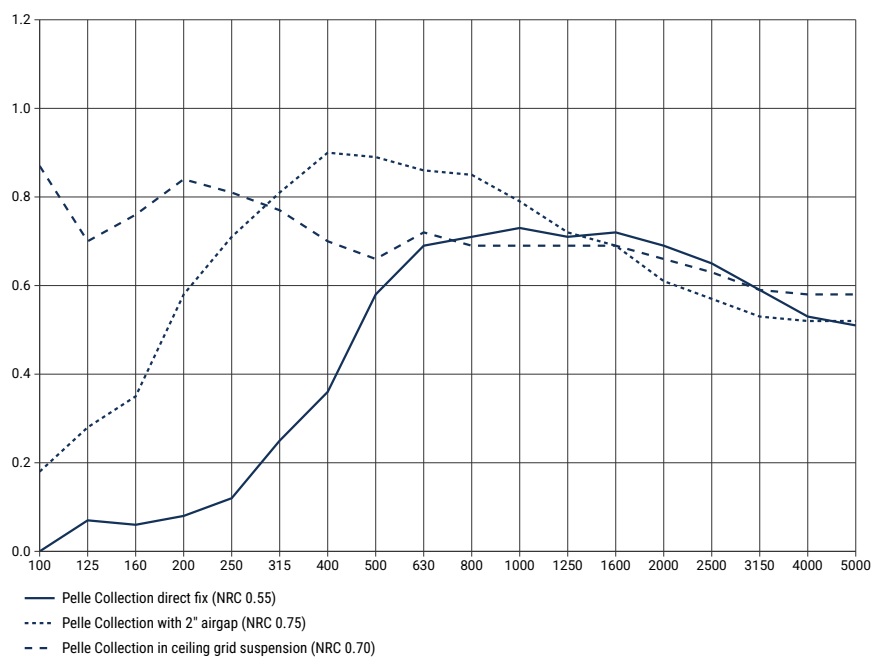


# PELLE COLLECTION



DESIGNER	Pavoni	<b>ADDITIONAL INFORMATION:</b> <ul style="list-style-type: none"><li>The Pelle Collection is produced using a wide-range of leather finishes in several unique patterns, applied to a black, semi-rigid PET felt panel. The leather is precision-cut and arranged with intentional spacing, allowing the felt to emerge between each shape. The result is a harmonious interplay of materials, textures, and contrasts, delivering exceptional sound absorption.</li><li>The Pelle Collection tiles are suitable for both wall and ceiling installations, fitting standard drop-ceiling grids.</li><li>Each of the designs in the Pelle Collection align on all four sides, perfect for large-scale or small-scale installations.</li><li>Custom patterns can be produced. Please contact Unika Vaev customer service for more details.</li><li>Because leather is a natural material, variations in grain and texture will occur from tile to tile or panel to panel. Once installed, these subtle differences in direction and character are considered an inherent part of the product's authentic appeal. This natural variation enhances the richness and depth of the finished installation.</li></ul>
CONTENT		
Backing	100% PET (60% recycled PET)	
Face	100% Leather	
DIMENSIONS		
Tile	23.6"(L) x 23.6"(W) x 0.49"(D) (600mm x 600mm x 12.3mm)	<b>ENVIRONMENT:</b> <ul style="list-style-type: none"><li>Red List Compliant</li><li>No FR Additives</li><li>No Conflict Minerals</li><li>Recycled Content</li><li>No PFAS/PFOS Chemicals Present</li><li>Health Product Declaration®</li><li>Published with Ecomedes</li><li>Published with mindful MATERIALS</li></ul>
Panel	59"(L) x 23.6"(W) x 0.49"(D) (1500mm x 600mm x 12.3mm)	
WEIGHT		
Affarone Tile	37oz per tile	
Volante Tile	38oz per tile	
Strisce Panel	88oz per panel	
FLAMMABILITY		
ASTM E84	Class B	
ACOUSTIC		
Direct Fix	0.55 (refer to graph on following page)	
2" Airgap	0.75 (refer to graph on following page)	
Ceiling	0.70 (refer to graph on following page)	
APPLICATION	Wall, Ceiling	
DESCRIPTION	The Pelle Collection by Pavoni combines acoustic performance with Italian leather craftsmanship. Finished in Pavoni's distinguished leathers, recognized for their use in prestigious brands, each design offers a surface that is both tactile and timeless.	

# PELLE COLLECTION ACOUSTIC



1/3 Octave band frequency (Hz)	Absorption Coefficient Direct Fix	Absorption Coefficient 2" Airgap	Absorption Coefficient Ceiling Grid
100	0.00	0.18	0.87
125	0.07	0.28	0.70
160	0.06	0.35	0.76
200	0.08	0.58	0.84
250	0.12	0.71	0.81
315	0.25	0.81	0.77
400	0.36	0.90	0.70
500	0.58	0.89	0.66
630	0.69	0.86	0.72
800	0.71	0.85	0.69
1000	0.73	0.79	0.69
1250	0.71	0.72	0.69
1600	0.72	0.69	0.69
2000	0.69	0.61	0.66
2500	0.65	0.57	0.63
3150	0.59	0.53	0.59
4000	0.53	0.52	0.58
5000	0.51	0.52	0.58
NRC	0.55	0.75	0.70